

Identification of hose which is included in recall can be done in different ways which are listed below. Please if uncertain about identification contact your point of purchase for help. Hoses made before June 2006 have a different design with integrated flow restriction orifice in the socket and shall not have a flow restriction insert, therefore your hose might miss a flow restriction insert without being a part of the recall.

Identify batch on hose



Batch code **Batchcode interpretation**
 1st digit of the alphanumeric code = year
 2nd digit = month (A-L)
 3rd digit is the lot that month starting with 1-9 followed by A-Z

Thread

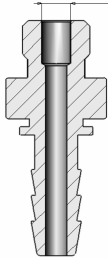
Note batch

Check in list below if your hose is subject for substitution of Flow Restriction Insert.

Measuring diameter

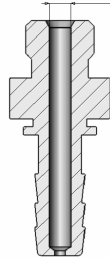
Socket for flow restriction insert

∅ 4mm



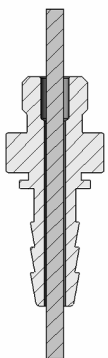
Socket integrated flow restriction orifice

∅ 3mm



Socket with integrated flow restriction orifice is not subject to the recall.

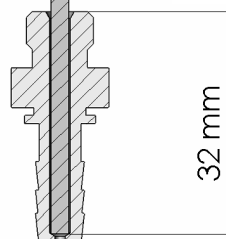
Control of integrated orifice is present.



Socket for flow restriction insert

∅ 2,5-2,9 mm

Pin for testing



Socket integrated flow restriction orifice

Socket with integrated flow restriction orifice is not subject to the recall

REMOVE pin after control.

vie	vkc	XAC	XCF	XEJ
vif	vk d	XAD	XCH	XEK
vig	vke	XAE	XCI	XEL
vih	vkf	XAF	XCJ	XEM
vii	vkg	XAG	XCK	XEN
vj1	vk h	XAH	XCL	XF1
vj2	vki	XAI	XCM	XF1 nm
vj3	vkj	XAJ	XD1	XF2
vj4	vkk	XB1	XD2	XF2 nm
vj5	vk l	XB2	XD3	XF3
vj6	vk m	XB3	XD4	XF4
vj7	vk n	XB4	XD5	XF5
vj8	vl1	XB5	XD6	XF6
vj9	VL1 nm	XB6	XD7	XF7
vja	vl2	XB7	XD8	XF9
vjb	VL2 nm	XB8	XD9	XFA
vjc	vl3	XB9	XDA	XFB
vjd	vl4	XBA	XDB	XFC
vje	vl7	XBB	XDC	XFD
vjf	vl8	XBC	XDD	XFE
vjg	vl9	XBD	XDE	XFF
vjh	vl a	XBE	XDG	XFG
vji	vl b	XBF	XDH	XG1
vjj	vl c	XBG	XE1	XG2
vjk	vl d	XBH	XE2	XG3
vjl	vl e	XC1	XE3 nm	XG4
vjm	vl f	XC2	XE4	XG5
vjo	vl g	XC2 nm	XE5	XG6
vjp	vl h	XC3	XE6	XG7
vjq	XA1	XC4	XE7	XG8
vk1	XA2	XC5	XE8	XG9
vk3	XA3	XC6	XE9	XGA
vk4	XA4	XC7	XEA	XGB
vk5	XA5	XC8	XEB	XGC
vk6	XA6	XC9	XEC	XGD
vk7	XA7	XCA	XED	XGF
vk8	XA8	XCB	XEF	XGG
vk9	XA9	XCC	XEG	XGH
vka	XAA	XCD	XEH	XGI
vk b	XAB	XCE	XEI	XGJ

XGK	XIJ	XKA	YAD	YD1
XGL	XIK	XKB	YB1	YD2
XGM	XIL	XKC	YB2	YD3
XGN	XIM	XKD	YB3	YD4
XGO	XIN	XKE	YB4	YD5
XGP	XIO	XKF	YB5	YD6
XH1	XJ	XKG	YB6	YD7
XH2	XJ1	XKH	YB7	YD8
XH3	XJ2	XKI	YB8	YD9
XH4	XJ3	XKJ	YB9	YDA
XH5	XJ4	XKK	YBA	YDB
XH6	XJ5	XL1	YBB	YDC
XH7	XJ6	XL2	YBC	YDD
XH8	XJ7	XL3	YBD	YDE
XH9	XJ8	XL4	YBE	YDF
XHA	XJ9	XL5	YBF	YDG
XHB	XJA	XL6	YBG	YDH
XHC	XJB	XL7	YBH	YDI
XHD	XJC	XL8/XK8	YBI	YDJ
XHE	XJD	XL9	YBJ	YDJ
XHF	XJE	XLA	YBK	YDK
XHG	XJF	XLB	YBL	YE
XHI	XJH	XLC	YBM	YE1
XI1	XJI	XLD	YC	YE2
XI2	XJJ	XLE	YC1	YE3
XI3	XJK	XLF	YC2	YE4
XI4	XJL	XLG	YC4	YE5
XI5	XJM	XLH	YC5	YE6
XI7	XJN	YA1	YC6	YE7
XI8	XJO	YA2	YC7	YE8
XI9	XJP	YA3	YC8	YE9
XIA	XK1	YA4	YC9	YEA
XIB	XK2	YA5	YCA	YEB
XIC	XK3	YA6	YCB	YEC
XID	XK4	YA7	YCC	YED
XIE	XK5	YA8	YCD	YEE
XIF	XK6	YA9	YCE	YEF
XIG	XK7	YAA	YCF	YEG
XIH	XK8	YAB	YCG	YEH
XII	XK9	YAC	YD	YEI

YEJ	YH1	YJ2 NM	ZA8	ZCN
YEK	YH1 NM	YJ3	ZA9	ZCM
YEL	YH2	YJ4	ZAA	ZCO
YEM	YH2 NM	YJ5	ZAB	ZCQ
YF	YH3	YJ6	ZAC	ZCR
YF1	YH4	YJ7	ZAD	ZCS
YF2	YH5	YJ8	ZAE	ZCT
YF3	YH6	YJ9	ZB1	ZCU
YF4	YH7	YJA	ZB2	ZCV
YF5	YH8	YK1	ZB4	
YF6	YH9	YK2	ZB6	
YF7	YHA	YK3	ZB7	
YF8	YHB	YK4	ZB8	
YF9	YHC	YK5	ZB9	
YFA	YHD	YK6	ZBA	
YFB	YHE	YK7	ZBB	
YFC	YHF	YK8	ZBC	
YG1	YHG	YK9	ZBD	
YG2	YHH	YKA	ZBE	
YG3	YI1 NM	YKB	ZC1	
YG4	YI2	YL1	ZC2	
YG5	YI2 NM	YL2	ZC3	
YG6	YI3	YL3	ZC4	
YG7	YI3 NM	YL4	ZC5	
YG8	YI4	YL5	ZC6	
YG9	YI5	YL6	ZC7	
YGA	YI6	YL7	ZC8	
YGB	YI7	YL8	ZC9	
YGC	YI8	YL9	ZCA	
YGD	YI9	YLA	ZCB	
YGE	YIA	YXI1	ZCC	
YGF	YIB	ZA	ZCD	
YGG	YIC	ZA1	ZCE	
YGH	YID	ZA1 NM	ZCF	
YGI	YIE	ZA2	ZCG	
YGJ	YIF	ZA3	ZCH	
YGK	YIG	ZA4	ZCI	
YGL	YJ1	ZA5	ZCJ	
YGM	YJ1 NM	ZA6	ZCK	
YH nm	YJ2	ZA7	ZCL	

